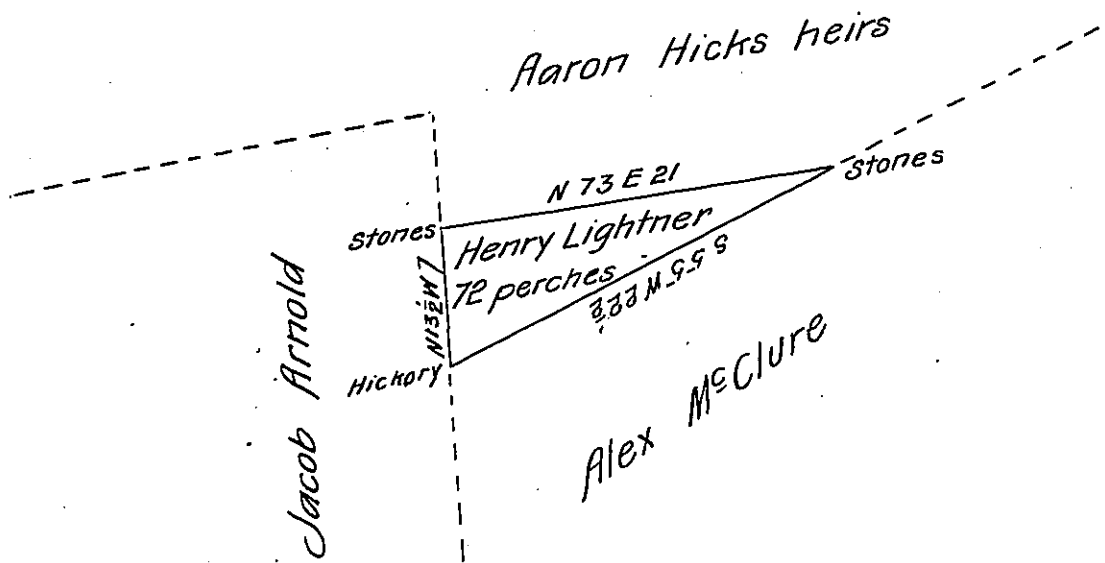


	N	S	E	W	M.D
N 13 1/2 W 7	6.8			1.6	384 4.00
S 73 E 21	6.1		20.0		200
S 55 W 22 1/2		12.9		18.4	184 368

N
384
68
3072
2304
261.12
122.00
383.12
23736
2)14576
72.88

N 200
61
122.00

S 184
129
1656
368
184
237.36



Draught of a lot of land situate in Madison Township Perry County containing 72 perches. Surveyed January the 24th 1851 in pursuance of a Warrant granted to Henry Lightner for one acre dated January 8th 1851.

James Woods C. S.

To John Laporte Esquire
Surveyor General of Pennsylvania.

I Certify the above lot
of land is unimproved
J. W. C. S.

IN TESTIMONY that the above is a copy of the original remaining on file in the Department of Internal Affairs of Pennsylvania, made conformably to an Act of Assembly approved the 16th day of February, 1833, I have hereunto set my Hand and caused the Seal of said Department to be affixed at Harrisburg, this twenty sixth day of September 1905.

Loac B. Pinner
Secretary of Internal Affairs.